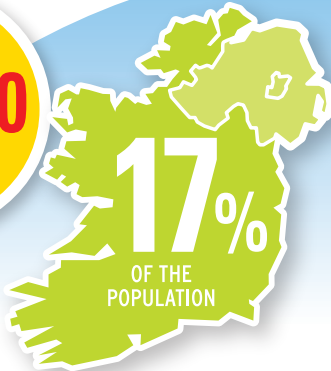


# PRIVATE WELLS

**720,000**  
PEOPLE  
IN IRELAND

are supplied  
by private  
groundwater  
sources\*

\*EPA 2010; CSO 2012



Properly sited,  
constructed and  
maintained wells  
are important to  
reduce the risk of  
contamination



## MANY PRIVATE WELLS ARE AT RISK FROM CONTAMINATION



DRINKING  
CONTAMINATED  
WATER CAN CAUSE  
SERIOUS  
ILLNESSES

**HARMFUL  
PARASITES**  
(Cryptosporidium)

**HARMFUL  
BACTERIA**  
(VTEC)

VTEC patients are up to  
times more  
likely to have  
consumed  
untreated  
private water

**4**

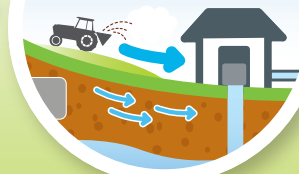
Is your  
wellhead  
sealed?



**STEP 1**

**CHECK YOUR WELL**  
Ensure your health  
is not at risk

Can surface  
water get  
into the well?



**STEP 2**

**CHECK FOR ANY SOURCES OF POLLUTION**

SEPTIC  
TANKS



1

SLURRY  
LANDSPREADING



2

CHEMICAL  
STORAGE



3

FUEL  
STORAGE TANKS



4

**STEP 3**

**TEST YOUR WELL WATER AT LEAST ONCE A YEAR**  
ideally following wet weather  
(treatment may be necessary  
if contaminated)

**FOR MORE INFORMATION**

See the Protect your Well app on  
[www.epa.ie](http://www.epa.ie)  
to assess your own water supply

**FOR MORE ADVICE & GRANT INFORMATION**

Check with your local authority,  
your local environmental health officer  
or the EPA at [www.epa.ie](http://www.epa.ie)

## IS YOUR PRIVATE WELL AT RISK FROM CONTAMINATION?

Many people assume that because their water comes from a well or a spring that it is safe to drink ...but this is NOT necessarily the case

**THERE ARE TWO MAIN THINGS TO CHECK TO MAKE SURE THAT CONTAMINATION IS NOT GETTING INTO YOUR WELL**

**1**

Is your wellhead sealed?

**2**

Can surface water get into the well?

### CHECK POSSIBLE SOURCES OF CONTAMINATION

SEPTIC TANKS

SLURRY LANDSPREADING

CHEMICAL STORAGE

FUEL STORAGE TANKS

ANIMALS NEAR WELLHEAD

ABANDONED BOREHOLES

**YOU SHOULD GET YOUR WELL TESTED AT LEAST ONCE A YEAR**

Your local authority Environment Section or HSE Environmental Health Officer may be able to advise on a suitable laboratory

**IF YOUR WELL IS CONTAMINATED YOU SHOULD:**

Take action to eliminate sources of contamination;  
and Install treatment;

OR

Connect to a public or group water supply

**VISIT YOUR LOCAL AUTHORITY WEBSITE OR THE PROTECTING YOUR PRIVATE WELL SECTION OF [WWW.EPA.IE](http://WWW.EPA.IE)**